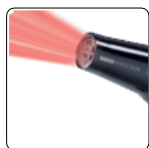


SOLIS Swiss Perfection Wall Mount

Type 443

Solis' most popular and powerful professional hair dryer with wall mount.



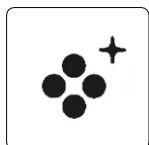
Perfect for full & thick hair

Provides 50% more air pressure and a 40% greater air flow than comparable professional hair dryers.



Freedom of movement

The spiral cable allows for easier styling all around the head.



Quick drying & healthy hair

Tourmaline + Ceramic + Ion technology for more shine, suppleness and better



Cold shot function

The cold shot function helps to seal the hair cuticle, setting the final look for long-lasting hold, and adds shine.



Features

- + Ergonomic handle prevents premature fatigue
- + Multiple speed and heat settings
- + Detachable hair filter for easy cleaning
- + Overheat protection to prevent motor from permanent damage
- + Designer wall mount with main switch
Security button: Pressing the button switches the device on.
If the button is released, the device switches off

Specifications

Article no.:	968.76 968.49
Colour:	black white
Output:	1,800 W
EAN:	7611210968764

So Swiss, so Solis.